



MZ AUDIO



MZ AUDIO
Mini Line Array

MiniMon

Key Features

- Built-In 3 Way Design
- 70° Horizontal x 60° Vertical
- 3-Way Single Driven

MiniMon continues the single-person operation design philosophy, tailored for stage monitoring with specific coverage and angle requirements. A concert-grade stage monitor, it also functions as a main PA for small systems or a fill/sub system for larger setups.



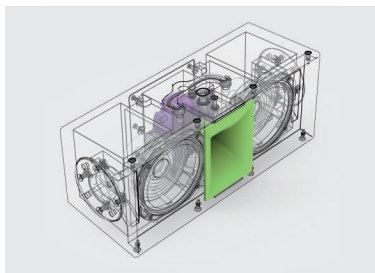
Removable Mid-High Module

The mid-high module uses Mini-Q-a performance-grade loudspeaker. A compression driver delivers power and sensitivity without compromising HF detail. Featuring the 44mm composite diaphragm HF driver, widely praised in the MiniRay series.



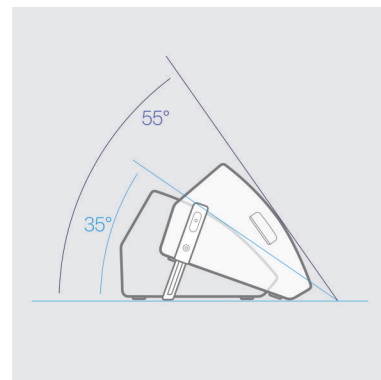
Short-Path Horn

The ultra-short horn path improves pattern control and reduces frequency interference between multiple enclosures — critical when Mini-Q serves as the mid-high module in MiniMon monitors. The result is a more natural sound.



Dual-Angle Design

Two preset angles for different applications. 35° for musicians and vocalists in live bands; 55° for dance performances.



Mini15C

Key Features

- 3-Way Single Driven
- Single 15" Integrated 3-Way Driver
- Hi-End Crossover

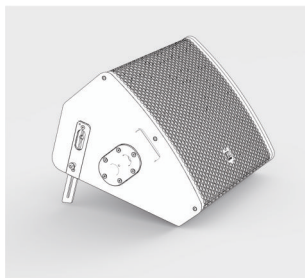
Single 15" Integrated 3-Way Coaxial

The Mini15C inherits the integrated coaxial 3-way design philosophy of the MiniRay3C, with innovations tailored for stage monitoring — delivering high dynamics, ample headroom, efficiency, resolution, and accurate reproduction.



Dual-Angle Design

Two preset angles for different applications. 35° for musicians and vocalists in live bands; 55° for dance performances.



3-Way | Single Driven | Hi-End Crossover

The Mini15C uses an internal passive crossover for single-amp 3-way operation. The Hi-End crossover features hybrid aluminum/polypropylene caps for bright mids and detailed highs, plus OFC foil inductors to eliminate skin effect for smooth sound-solving passive insertion loss.



12AM

Key Features

- Built-In 2 Way Design
- Coaxial HF/LF Configuration
- 3" Compression Driver
- 80° x 80° Symmetric Coverage



12" Coaxial Monitor

12 AM is a 2-Way Coaxial Stage Monitor. The 3" compression driver and high-power 12" woofer deliver exceptional vocal performance. The coaxial design eliminates the acoustic flaws of traditional off-axis monitors for superior sound quality.

The optimized enclosure angle - specifically designed for professional stage monitoring - is favored by live performers, ensuring seamless integration with the stage and artist.



MZ AUDIO

Mini Line Array

SPECIFICATIONS

MiniMon

I2AM

Frequency Range(-10dB)	50 Hz-18k Hz	45 Hz~18 kHz
MAX SPL	131dB SPL Peak	133 dB SPL Peak
Coverage	Horizontal 70° / Vertical 60°	80°× 80°
Transducers	1 x 44 mm ND HF Driver; 2×5"MF Driverv/ 1×10"Woofer	1×3"ND HF Driver / 1×12"Rubber-Surround Paper Woofer
Nominal Impedance	8 Ω	8 Ω
Power (AES)	300 W	450 W
Cabinet	Baltic Birch Plywood	Baltic Birch Plywood
Painting	Polyurea Paint Finish	Polyurea Paint Finish
Dimensions (W×H×D)	500 × 330 × 480 mm	570 × 360 × 500 mm
Weight	22.6 kg / 49.8 lbs	25 kg / 55.1 lbs

MiniI5C

Frequency Range(-10dB)	45 Hz~18 kHz
MAX SPL	136 dB SPL Peak
Coverage	Horizontal 80° / Vertical 45°
Driving Mode	3-Way Single Drive
Transducers	1 x 15"Woofer Integrated 3-Way Coaxial +1 x 100mm Compression MF Driver +1 x 65mm Compression HF Driver;
Nominal Impedance	8 Ω
Power (AES)	500 W
Cabinet	Baltic Birch Plywood
Painting	Polyurea Paint Finish
Dimensions (W×H×D)	580 x 362 x 510 mm
Weight	26.4 kg / 58.2 lbs

MZ AUDIO
Mini Line Array

small footprint
SONIC IMPACT



MZ AUDIO

www.mzaudio.net

MZ audio technology development Co.,Ltd.

V2.3